

MICRO SWITCH

FREEPORT ILLINOIS, U.S.A
A DIVISION OF HONEYWELL

FED. MFG. CODE 91929

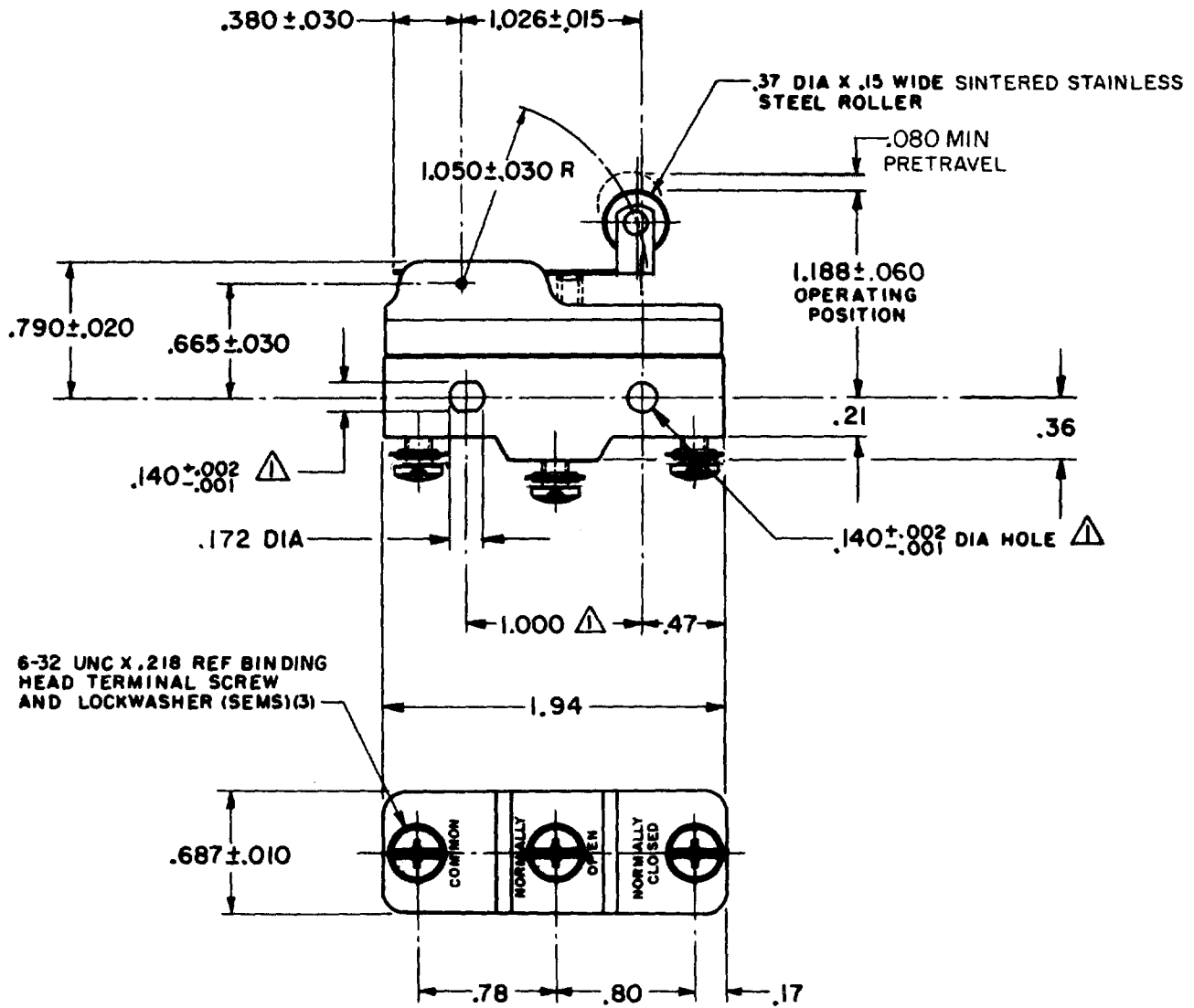
SWITCH-BASIC

CATALOG LISTING

BZ-2RW82276T

APT8640

BZ-2RW82276T
 PAGE 1 OF 1
M
 DRAWING NUMBER
 10
 ISSUE
 RELEASE NO. PR-517
 REPLACES
 CHECK
 08DEC05
 RJ
 CHECK
 15 OCT 68
 DRAWN
 G F S 15 OCT 68
 FORMTEK
 FO-50378-1A



NOTE
 Δ MOUNTING HOLES WILL ACCEPT PINS OR SCREWS OF $.139$ MAX DIA ON $1.000 \pm .002$ CENTERS

THIS DRAWING COVERS A PROPRIETARY ITEM AND IS THE PROPERTY OF MICRO SWITCH, A DIVISION OF HONEYWELL. THIS DRAWING IS NOT TO BE COPIED OR USED WITHOUT THE APPROVAL OF MICRO SWITCH.

CHARACTERISTICS	ELECTRICAL DATA	SCALE FULL
OPERATING FORCE----- 6 OZ MAX	CONTACT ARRANGEMENT S P D T	DO NOT SCALE PRINT
RELEASE FORCE----- 1 1/2 OZ MIN	-L96- 15 A - 125, 250, OR 480 VAC 1/2 A - 125 VDC; 1/4 A - 250 VDC 1/8 HP - 125 VAC, 1/4 HP - 250 VAC	UNLESS OTHERWISE NOTED DIMENSIONS ARE IN INCHES
DIFFERENTIAL TRAVEL----- .020 MAX	-L288- -L315- -L306-	TOLERANCES ARE: ONE PLACE (.0) $\pm .030$ TWO PLACE (.00) $\pm .015$ THREE PLACE (.000) $\pm .005$ ANGLES \pm
OVERTRAVEL----- .049 MIN	CE 05 16A 250V \sim T85 5E4	WEIGHT .076 LB